

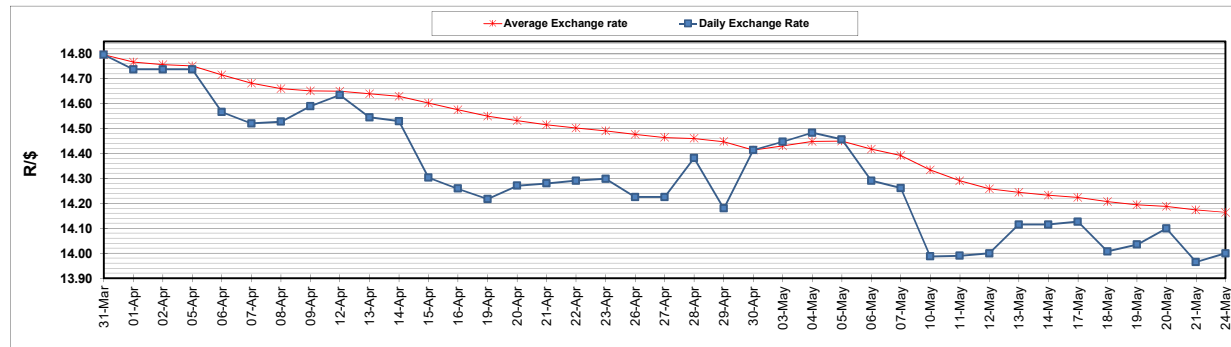
|  | PETROL 95<br>ULP | PETROL 93<br>ULP & LRP | DIESEL<br>0.05% | DIESEL<br>0.005% | ILL. PAR. |
|--|------------------|------------------------|-----------------|------------------|-----------|
| GAUTENG PUMP PRICE (SA c/l) AS FROM 05/05/2021                     | 1,723.000        | 1,701.000              | -               | -                | -         |
| WHOLESALE PRICE (SA c/l) AS FROM 05/05/2021                        | -                | -                      | 1,446.620       | 1,450.020        | 857.488   |
| SINGLE NATIONAL MAXIMUM RETAIL PRICE                               | -                | -                      | -               | -                | 1,076.000 |
| BASIC FUEL PRICE - 24/05/2021 (SA c/l)                             | 707.650          | 697.646                | 681.337         | 686.502          | 660.839   |
| PRESS RELEASE CONTRIBUTION TO BFP 05/05/2021 - 24/05/2021 (SA c/l) | 727.170          | 715.170                | 659.630         | 663.030          | 644.128   |
| UNIT OVER/(UNDER) RECOVERY - 24/05/2021 (SA c/l)                   | 19.520           | 17.524                 | (21.707)        | (23.472)         | (16.711)  |
| AVERAGE BASIC FUEL PRICE 30/04/2021 - 24/05/2021                   | 720.006          | 709.321                | 684.545         | 688.760          | 670.366   |
| AVERAGE UNIT OVER/(UNDER) RECOVERY 30/04/2021 - 24/05/2021         | 8.752            | 7.437                  | (19.445)        | (20.436)         | (22.179)  |

### ANALYSIS MOVEMENT OF AVERAGE OVER/(UNDER) RECOVERY

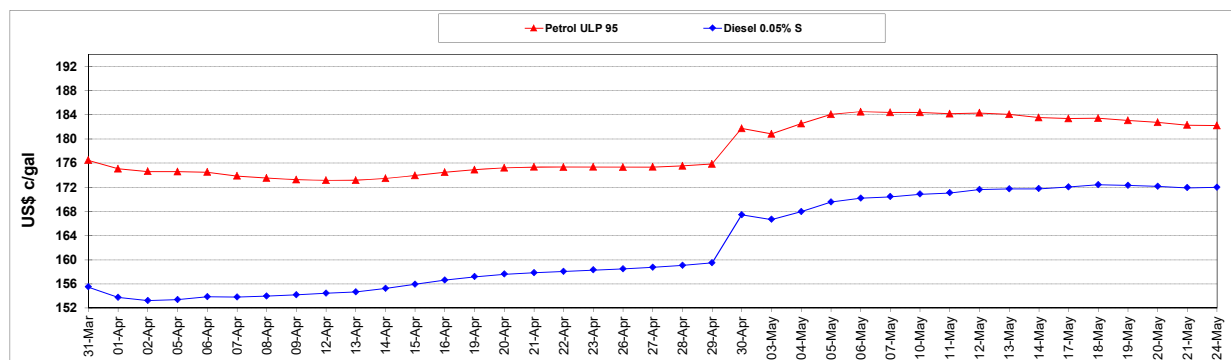
|  | PETROL 95 | PETROL 93 | DIESEL 0.05% | DIESEL 0.005% | ILL. PAR. |
|--|-----------|-----------|--------------|---------------|-----------|
| - MOVEMENT IN INTERNATIONAL PRODUCT PRICES                 | (5.669)   | (6.770)   | (33.155)     | (34.231)      | (35.606)  |
| - MOVEMENT IN EXCHANGE RATE                                | 14.421    | 14.207    | 13.711       | 13.795        | 13.427    |
| AVERAGE UNIT OVER/(UNDER) RECOVERY 30/04/2021 - 24/05/2021 | 8.752     | 7.437     | (19.445)     | (20.436)      | (22.179)  |

### R/\$ EXCHANGE RATE - (R/\$13.9998- 24/05/2021)

#### EXCHANGE RATE USED IN BASIC FUEL PRICE



#### INTERNATIONAL PRODUCT PRICES OF BASKET USED IN BASIC FUEL PRICE



#### BASIC FUEL PRICE IN SA CENTS PER LITRE

